

Safety Valves, Safety Relief Valves, Relief Valves

4

Fluid	Type	Main uses	Size	Page
Manufacture range list				▶ 108
Steam, gas, liquid	RPF12 Safety Relief Valve (Lift type)	Pressure vessel, Line protection	Small capacity 15—80	▶ 111
Steam, gas, liquid	RPF13 Safety Relief Valve (Lift type)	Pressure vessel, Line protection	Small capacity 15—40	▶ 113
Gas	RPS16 Safety Relief Valve (Lift type)	Pressure vessel, Line protection	Soft sheet 15—80	▶ 114
Gas	RPS17 Safety Relief Valve (Lift type)	Pressure vessel, Line protection	Soft sheet 15—40	▶ 114
Water, liquid	RPC14 Relief Valve	Pump discharge relief	15—80	▶ 118
Water	R101-1BHA Relief Valve	Water tank	Soft sheet 15—40	▶ 121
Steam, gas, water, liquid	RPN6B Safety valve & Safety Relief Valve (Full bore type)	Pressure vessel, Line protection	Large capacity 25—200	▶ 124
Reference material				
Applicable code and calculating formula for certified capacity				▶ 129
Performance, Terms				▶ 133
Notes for installation and maintenance of safety relief valve				▶ 134



Please refer to instruction manual for installation and operating.

Inquiry

Please specify followings at inquiry.

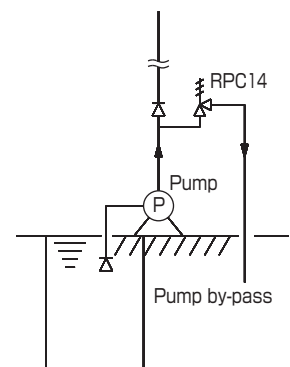
1. Fluid
2. Pressure, temperature, required flow rate
3. Set pressure
4. Type, Size
5. Material for body
6. Others

4

Safety Valves - Safety Relief Valves - Relief Valves

Model				RPN6B			RPF12		
Size				25—200	25—150		15—80		
Pressure MPa				0.05—1.0	0.05—2.0		0.02—1.6	0.02—2.0	
Temperature ℃				0—220(¹)	—5—+300(¹)	—30—+200	0—220(¹)	—5—+220(¹)	—30—+200
Materials	Body			Cast iron	Cast steel	Stainless cast steel	Cast iron †	Cast steel	Stainless cast steel
	Valve, seat			Stainless cast steel stellited	Stainless cast steel stellited	Stainless cast steel stellited	Stainless steel	Stainless steel or Stainless steel stellited	Stainless steel stellited
Use for	Pressure vessel	Steam		○	○	○	○	○	○
		Air		○	○	○	○	○	○
		Water		○	○	○			○
		Non-corrosive	Gas	○	○	○	○	○	○
			Liquid	○	○	○	○	○	○
		Corrosive	Gas			○			○
			Liquid			○			○
	Pressure control	Steam		○	○	○	○	○	○
		Air		○	○	○	○	○	○
		Water		○	○	○			○
		Non-corrosive	Gas	○	○	○	○	○	○
			Liquid	○	○	○	○	○	○
		Corrosive	Gas			○			○
			Liquid			○			○
	Pump by-pass	Water							
		Non-corrosive	Liquid						
		Corrosive	Liquid						
	Thermal relief	Water							○
Non-corrosive		Liquid				○	○	○	
Corrosive		Liquid						○	
Page				124—127			111—112		

† : The body material for sizes 15—40, JIS16K is spheroidal graphite cast iron.
Note (1) : For “With lever opened”. In case of “Non-lever closed”, it is 0—200°C.

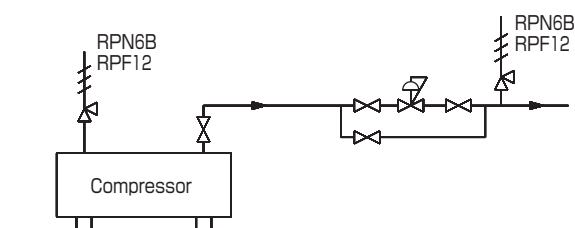
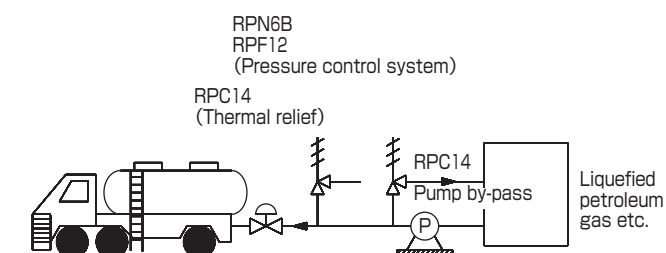


Specification of Safety Relief Valves etc. (2)

4

Safety Valves, Safety Relief Valves, Relief Valves

Model			RPF13		RPS16			
Size			15—40		15—80			
Pressure MPa			0.02—1.6	0.02—2.0	0.02—1.6	0.02—2.0		
Temperature ℃			0—220(′)	—10—+200	0—110	—5—+110	—30—+110	
Materials	Body		Cast Iron	Stainless steel	Cast Iron	Cast steel	Stainless cast steel	
	Valve, seat		Stainless steel	Stainless steel stellited	Stainless steel and synthetic rubber	Stainless steel and synthetic rubber	Stainless steel and synthetic rubber	
Use for	Pressure vessel	Steam		○	○			
		Air		○	○	○	○	○
		Water			○			
		Non-corrosive	Gas	○	○	○	○	○
			Liquid	○	○			
		Corrosive	Gas		○			○
			Liquid		○			
	Pressure control	Steam		○	○			
		Air		○	○	○	○	○
		Water			○			
		Non-corrosive	Gas	○	○	○	○	○
			Liquid	○	○			
		Corrosive	Gas		○			○
			Liquid		○			
	Pump by-pass	Water						
		Non-corrosive	Liquid					
		Corrosive	Liquid					
	Thermal relief	Water			○			
		Non-corrosive	Liquid	○	○			
		Corrosive	Liquid		○			
Page			113		114			



Specification of Safety Relief Valves etc. (3)

Model			RPS17		RPC14			R101-1BHA	
Size			15—40		15—80			15—40	
Pressure MPa			0.02—1.6	0.02—2.0	0.04—1.6	0.04—2.0		0.05—1.6	
Temperature ℃			0—110	−30—+110	0—200	−5—+200	−30—+200	0—100	
Materials	Body		Cast Iron	Stainless steel	Cast Iron	Cast steel	Stainless cast steel	Bronze	
	Valve, seat		Stainless steel and synthetic rubber	Stainless steel and synthetic rubber	Stainless steel	Stainless steel or stainless steel stellited	Stainless steel stellited	Bronze, synthetic rubber	
Use for	Pressure vessel	Steam							
		Air		○	○				
		Water						○	
		Non-corrosive	Gas	○	○				
			Liquid						
		Corrosive	Gas		○				
			Liquid						
	Pressure control	Steam							
		Air		○	○				
		Water				○	○	○	○
		Non-corrosive	Gas	○	○				
			Liquid			○	○	○	
		Corrosive	Gas		○				
			Liquid					○	
	Pump by-pass	Water				○	○	○	
		Non-corrosive	Liquid			○	○	○	
		Corrosive	Liquid					○	
	Thermal relief	Water							
		Non-corrosive	Liquid						
		Corrosive	Liquid						
Page			114		118—120			121	

