

Float
Trap

Type BFF27 Float Traps

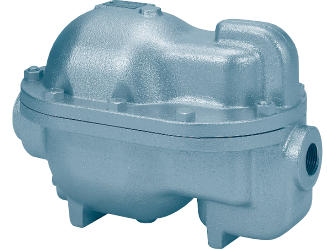
For
steam

Built-in automatic air vent valve.

No seat leakage and long life through free and hard ball valve

Features

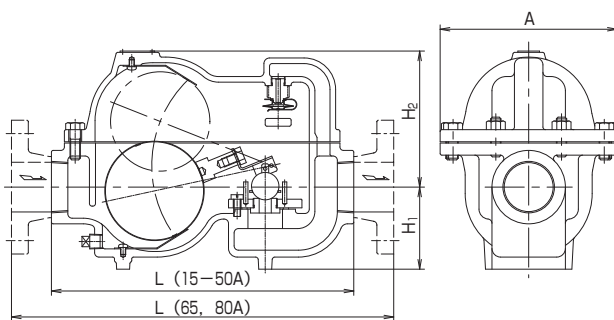
- The valve of true ball made of stainless steel can be sat completely on seat by unique mechanism and internal pressure.
It is possible to close long time and saving energy.
- The free ball and the cushion for float stopper will prevent any shock and damages.
- Membrane built-in as air vent valve



Specifications

Fluid		Steam, condensate	
Maximum pressure		0.4MPa	
Maximum differential pressure		0.4MPa	
Maximum temperature		151℃	
Size		15-50	65, 80
Connection		Screwed JIS Rc	Flanged JIS10KFF
Material	Body, Cover	Cast iron	
	Seat	Stainless steel	
	Float	Brass	
	Gasket	Graphite	
Use for		Heat exchanger, Absorbed refrigerating machine, Storage tank, Air-conditioning machine	

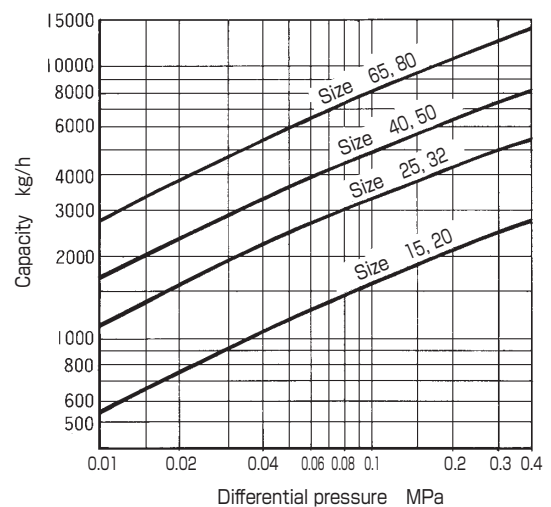
Construction



(mm, kg)

Size	Dimensions				Weight
	L	H ₁	H ₂	A	
15, 20	255	82	120	170	10.5
25, 32	330	95	130	190	16
40, 50	350	95	156	205	19
65, 80	500	155	182	230	35

Capacity





Float
Trap

Type BLF10 Heavy Duty Float Traps

For
steam

BLF10 float trap has a function to discharge large flow of condensate continuously.

Features

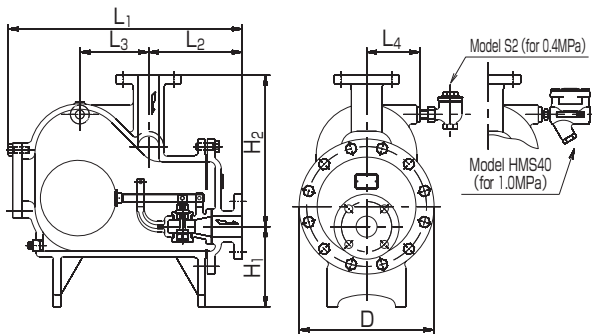
- Substantial and easy construction
- Large flow by dual seat and wide pressure range



Specifications

Fluid		Steam, condensate	
Maximum pressure		0.4MPa	1.0MPa
Maximum differential pressure		0.2MPa	0.6MPa
Maximum temperature		151°C	220°C
Size		40—65	
Connection		Flanged JIS10KFF	
Material	Body, Cover	Cast iron	
	Seat	Stainless steel	
	Float	Brass	Stainless steel
	Gasket	Graphite	
Use for		Heat exchanger, Absorbed refrigerating machine	

Construction



(mm, kg)

Size	Dimensions							Weights
	L ₁	L ₂	L ₃	L ₄	H ₁	H ₂	D	
40	476	192	127	112.5	184	304	284	66
50	558	224	167	127.5	191	361	322	88
65	667	270	200	153	207	446	378	119

Capacity

