

Pipe flanges

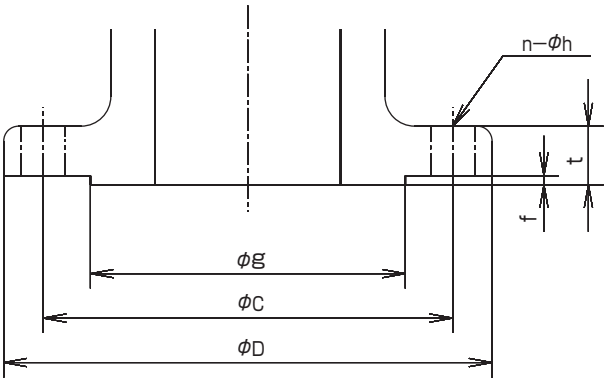
JIS Flanges

JIS B 2220-2004
JIS B 2239-2004

(mm)

Nominal pressure	Nominal diameter	Flange					Bolt hole			Nominal size of bolt
		D	t (¹)		f	g	c	n	h	
10K	15	95	12	(16)	1	51	70	4	15	M12
	20	100	14	(18)	1	56	75	4	15	M12
	25	125	14	(18)	1	67	90	4	19	M16
	32	135	16	(20)	2	76	100	4	19	M16
	40	140	16	(20)	2	81	105	4	19	M16
	50	155	16	(20)	2	96	120	4	19	M16
	65	175	18	(22)	2	116	140	4	19	M16
	80	185	18	(22)	2	126	150	8	19	M16
	100	210	18	(24)	2	151	175	8	19	M16
	125	250	20	(24)	2	182	210	8	23	M20
16K	15	95	12	—	1	51	70	4	15	M12
	20	100	14	—	1	56	75	4	15	M12
	25	125	14	—	1	67	90	4	19	M16
	32	135	16	—	2	76	100	4	19	M16
	40	140	16	—	2	81	105	4	19	M16
	50	155	16	—	2	96	120	8	19	M16
	65	175	18	(22)	2	116	140	8	19	M16
	80	200	20	(24)	2	132	160	8	23	M20
	100	225	22	(26)	2	160	185	8	23	M20
	125	270	22	(26)	2	195	225	8	25	M22
20K	15	95	14	(16)	1	51	70	4	15	M12
	20	100	16	(18)	1	56	75	4	15	M12
	25	125	16	(20)	1	67	90	4	19	M16
	32	135	18	(20)	2	76	100	4	19	M16
	40	140	18	(22)	2	81	105	4	19	M16
	50	155	18	(22)	2	96	120	8	19	M16
	65	175	20	(24)	2	116	140	8	19	M16
	80	200	22	(26)	2	132	160	8	23	M20
	100	225	24	(28)	2	160	185	8	23	M20
	125	270	26	(30)	2	195	225	8	25	M22
30K	15	115	20	(18)	1	55	80	4	19	M16
	20	120	20	(18)	1	60	85	4	19	M16
	25	130	22	(20)	1	70	95	4	19	M16
	32	140	22	(20)	2	80	105	4	19	M16
	40	160	22	(22)	2	90	120	4	23	M20
	50	165	22	(22)	2	105	130	8	19	M16
	65	200	26	(24)	2	130	160	8	23	M20
	80	210	28	(26)	2	140	170	8	23	M20
	100	240	32	(28)	2	160	195	8	25	M22
	125	275	36	(30)	2	195	230	8	25	M22
40K	15	115	20	(18)	1	55	80	4	19	M16
	20	120	20	(18)	1	60	85	4	19	M16
	25	130	22	(20)	1	70	95	4	19	M16
	32	140	24	(20)	2	80	105	4	19	M16
	40	160	24	(22)	2	90	120	4	23	M20
	50	165	26	(22)	2	105	130	8	19	M16
	65	200	30	(24)	2	130	160	8	23	M20
	80	210	32	(26)	2	140	170	8	23	M20
	100	250	36	(28)	2	165	205	8	25	M22
	125	300	40	(30)	2	200	250	8	27	M24
	150	355	44	(34)	2	240	295	12	33	M30
	200	405	50	(40)	2	290	345	12	33	M30

Note (¹) : () shows for cast iron

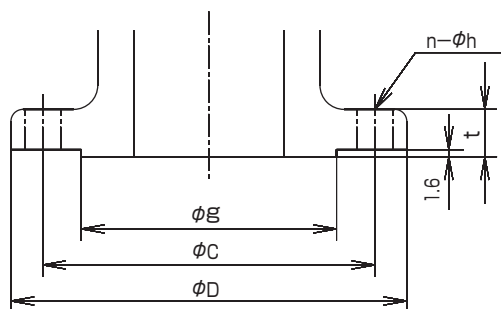


ASME Flanges ASME B16.5-1996

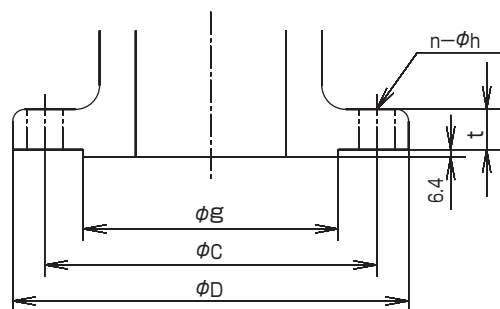
(mm)

Nominal pressure	Nominal diameter ⁽¹⁾	Flange			Bolt hole			Nominal size of bolt
		D	t	g	c	n	h	
150	1/2 (15)	89	11.5	35.1	60.5	4	16	1/2
	3/4 (20)	99	13.0	42.9	69.8	4	16	1/2
	1 (25)	108	14.5	50.8	79.2	4	16	1/2
	1 1/4 (32)	117	16.0	63.5	88.9	4	16	1/2
	1 1/2 (40)	127	18.0	73.2	98.6	4	16	1/2
	2 (50)	152	19.5	91.9	120.6	4	19	5/8
	2 1/2 (65)	178	22.5	104.6	139.7	4	19	5/8
	3 (80)	190	24.0	127.0	152.4	4	19	5/8
300	4 (100)	229	24.0	157.2	190.5	8	19	5/8
	5 (125)	254	24.0	185.6	215.9	8	22	3/4
	6 (150)	279	25.5	215.9	241.3	8	22	3/4
	8 (200)	343	28.5	269.7	298.4	8	22	3/4
	10 (250)	406	30.5	323.8	362.0	12	26	7/8
	12 (300)	483	32.0	381.0	431.8	12	26	7/8
600	1/2 (15)	95	14.5	35.1	66.5	4	16	1/2
	3/4 (20)	117	16.0	42.9	82.6	4	19	5/8
	1 (25)	124	18.0	50.8	88.9	4	19	5/8
	1 1/4 (32)	133	19.5	63.5	98.6	4	19	5/8
	1 1/2 (40)	155	21.0	73.2	114.3	4	22	3/4
	2 (50)	165	22.5	91.9	127.0	8	19	5/8
	2 1/2 (65)	190	25.5	104.6	149.4	8	22	3/4
	3 (80)	210	28.5	127.0	168.1	8	22	3/4
ASME 400 • 600	4 (100)	254	32.0	157.2	200.2	8	22	3/4
	5 (125)	279	35.5	185.6	235.0	8	22	3/4
	6 (150)	318	37.0	215.9	269.7	12	22	3/4
	8 (200)	381	41.5	269.7	330.2	12	26	7/8
	10 (250)	444	48.0	323.8	387.4	16	29	1
	12 (300)	520	51.0	381.0	450.8	16	32	1 1/8
ASME 150 • 300	1/2 (15)	95	14.5	35.1	66.5	4	16	1/2
	3/4 (20)	117	16.0	42.9	82.6	4	19	5/8
	1 (25)	124	18.0	50.8	88.9	4	19	5/8
	1 1/4 (32)	133	21.0	63.5	98.6	4	19	5/8
	1 1/2 (40)	155	22.5	73.2	114.3	4	22	3/4
	2 (50)	165	25.5	91.9	127.0	8	19	5/8
	2 1/2 (65)	190	28.5	104.6	149.4	8	22	3/4
	3 (80)	210	32.0	127.0	168.1	8	22	3/4
ASME 400 • 600	4 (100)	273	38.5	157.2	215.9	8	26	7/8
	5 (125)	330	44.5	185.6	266.7	8	29	1
	6 (150)	356	48.0	215.9	292.1	12	29	1
	8 (200)	419	56.0	269.7	349.2	12	32	1 1/8
	10 (250)	510	63.5	323.8	431.8	16	35	1 1/4
	12 (300)	560	67.0	381.0	489.0	20	35	1 1/4

Note (1) : Shows by inches (B size). () shows by metric (A size).



ASME 150 • 300



ASME 400 • 600

Remark : Please inform us which flange face finish is required "with serration" or "without serration".